

EXPERIENCE

the world's premier

ED TECH EVENT



Professional Development for the Whole Education Team

Superintendents, Assessment Directors, Principals, Policy Makers

- Ideas and solutions for leveraging your technology infrastructure for school improvement and assessment
- Numerous opportunities for leadership development and advocacy

K–12 Teachers, Technology Integration & Curriculum Specialists

- Lecture and Poster sessions full of great ideas for integrating technology, elearning, and promoting digital-age learning through the NETS•S
- Workshops and BYOL (Bring Your Own Laptop) Sessions offering hands-on training with practical and useful technology applications
- Model Lessons for observing or participating in replicable units of instruction

Chief Technology Officers, Technology Coordinators, Staff Developers

- Exciting, effective solutions for professional learning including online professional development
- Proven strategies for technology funding, infrastructure development, and support

Library Media Specialists

- Model practices for teaching information and media literacy
- A 21st Century Media Center Playground full of electronic resources for students, teachers, and administrators

Teacher Educators

- Curriculum ideas for methods courses and distance learning
- Models for meeting accreditation requirements and achieving the NETS

www.isteconference.org

Destination Philadelphia

In the US “city of brotherly love,” ISTE invites you to join your colleagues and expand our collective vision of an educational community where **resources, best practices, partnerships, accountability, and achievement** converge.

“I feel like I’m literally walking among giants of the ed tech world here. And I kind of scabble up and climb on their shoulders, and just see the big picture from that vantage point. And it’s an amazing view.”

—Andrew Wheelock, Tech Coordinator, New York



“It’s the excitement, it’s the passion, it’s the energy... when you come to an event like ISTE’s, where everyone’s so in love with what they do and passionate about it, that’s your reminder. You’re lifted up.”

—Dr. Annette Smith, Technology Director, Wisconsin

International Society for
Technology in Education
180 West 8th Ave., Suite 300
Eugene, OR 97401-2916

Attend the world's premier ed tech conference
and earn continuing education units!

Nonprofit
Organization
US Postage
PAID
Eugene, OR
Permit No 585



philadelphia ■ JUNE 26-29
Pennsylvania Convention Center
www.isteconference.org

ISTE 2011 offers hundreds of
sessions and workshops for...

- Classroom and Online Teachers
- Chief Technology Officers
- Technology Coordinators and Integration Specialists
- Library Media Specialists
- Building and District Administrators
- Teacher Educators
- Government & Industry Representatives
- ...and You!

NS11HB

UNLOCKING POTENTIAL

thirty-second annual

CONFERENCE AND EXPOSITION

Formerly the National Educational Computing Conference (NECC)



iste 2011

philadelphia ■ JUNE 26-29
Pennsylvania Convention Center

Register and Reserve
HOUSING
TODAY!

WWW.ISTECONFERENCE.ORG

✧ SCHEDULE OF EVENTS ✧

Saturday, June 25

Registration opens
Preconference workshops*
Tours*

Sunday, June 26

Preconference workshops*, forums*, institutes*, and symposia*
Conference Kick-off and Awards
Tours*
Opening Keynote
Opening Reception

Monday, June 27

Conference sessions and workshops*
Exhibit Hall
Tours*

Tuesday, June 28

Conference sessions and workshops*
Keynote Session (morning)
Exhibit Hall
Tours*

Wednesday, June 29

Conference sessions and workshops*
Exhibit Hall
Tours*
Closing Keynote and ISTE 2012 preview (afternoon)

*Additional fee applies

Join us early
SUNDAY
Plan to arrive in time to
take part in the kickoff
and member networking
events beginning midday.

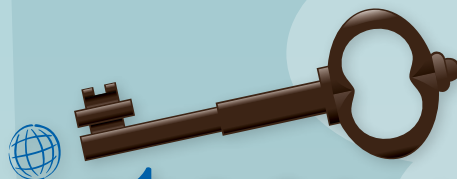


Get and stay
CONNECTED!

Scan the code with your smartphone to visit
the ISTE 2011 Ning and join the conversation!



UNLOCKING POTENTIAL



iste 2011

philadelphia ■ JUNE 26–29

Pennsylvania Convention Center



Digital technologies are **opening doors, unlocking student potential, and changing education.** As the world's leading ed tech membership association, ISTE forges new ground every day through its member connections, professional development offerings, and advocacy efforts.



Join Us

Sessions, keynotes, and an expansive range of interactive content... all designed with your hands-on learning needs in mind. From professional development and networking to real-world solutions, ISTE 2011 is a once-a-year opportunity to exchange best practices, learn, and collaborate with innovative educators from around the globe.

ISTE 2011 is presented in cooperation with Pennsylvania Association for Educational Communications & Technology (PAECT). Learn more at paect.org.

About ISTE

The International Society for Technology in Education (ISTE®) is the premier membership association for educators and education leaders engaged in advancing excellence in learning and teaching through innovative and effective uses of technology. ISTE is the trusted source in education technology for professional development, knowledge generation, advocacy, and leadership for innovation.

ISTE's annual conference and exposition is the world's premier educational technology event. ISTE is also home to the NETS – standards that deliver a roadmap for global digital-age learning, teaching and school leadership.

ISTE members include individuals, regional and international affiliate organizations, and corporations. With its affiliate network, ISTE represents more than 100,000 education leaders and emerging leaders throughout the world.



CONFERENCE AND WORKSHOP FEES

Conference Registration Fees

Super Early Bird (through March 31, 2011)

Current ISTE Member*	\$235
General Public (Non-Member) Includes ISTE Membership	\$330
One-Day	\$175

Early Bird (through May 1, 2011)

Current ISTE Member*	\$275
General Public (Non-Member) Includes ISTE Membership	\$370
One-Day	\$195

Pre-Reg/Onsite (after May 1, 2011)

Current ISTE Member*	\$305
General Public (Non-Member) Includes ISTE Membership	\$400
One-Day	\$210

Special Categories

Groups of 10+ ISTE Members	\$235
Groups of 10+, (Non-Member) Includes ISTE Membership	\$330
Full-Time Student and Current ISTE Member	\$160
Full-Time Student	\$199
Retired Educator	\$160
Guest	\$150

Presenters and Volunteers

Presenters and volunteers receive the Super Early-Bird rate at any time, based on their membership status

*Your membership must be valid through June 29, 2011, to qualify for the ISTE member rate.

**Workshops, tours, and some forums/symposia require an additional fee and ticket. More info about these events will be available online in mid-February.

Workshop Fees**

Super Early Bird/Early-Bird (through May 1, 2011)

Half-Day (3 hours)	\$ 99
Full-Day (6 hours)	\$199
Two-Day (12 hours)	\$399

Pre-Reg/Onsite (after May 1, 2011)

Half-Day (3 hours)	\$109
Full-Day (6 hours)	\$219
Two-Day (12 hours)	\$439





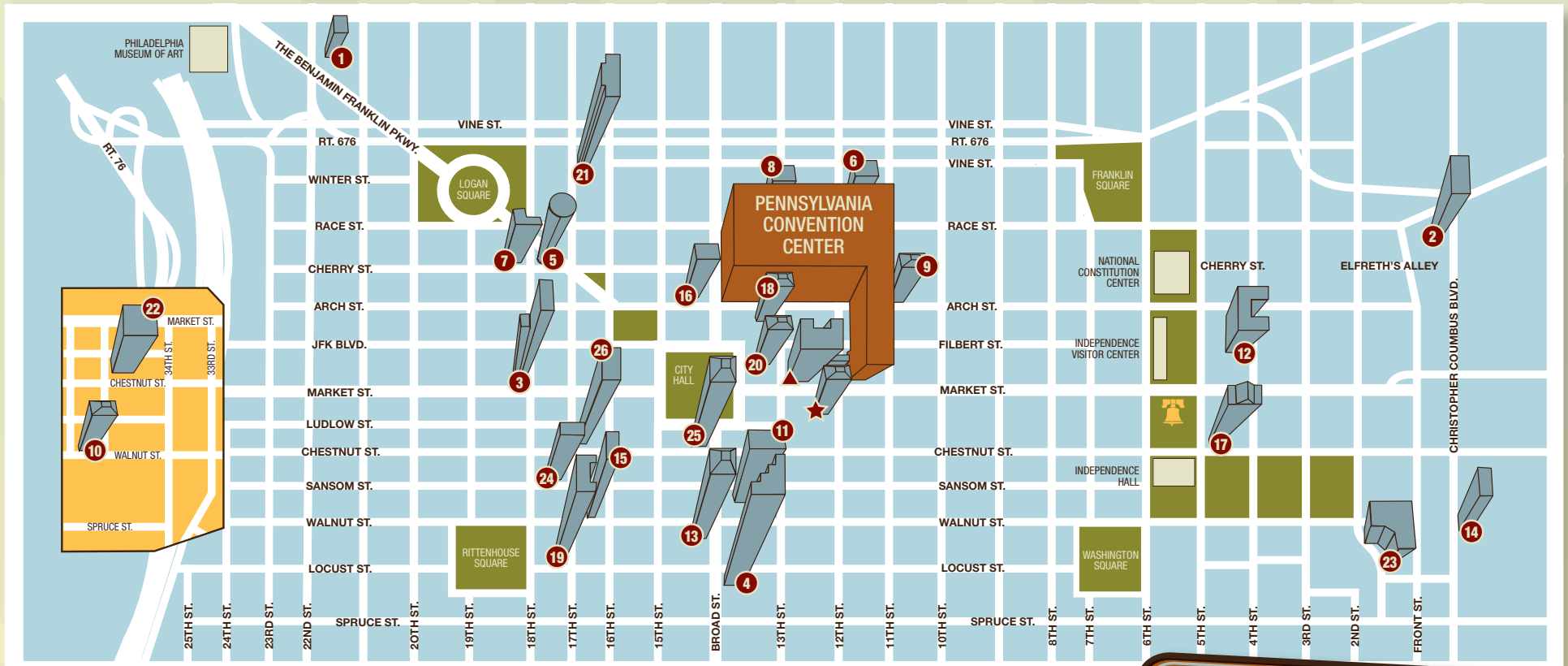
Get the

INSIDE SCOOP!



Scan the code with your smartphone for more details about housing!

HOTELS AND RATES



	SINGLE	DOUBLE
★ HQ Loews Philadelphia Hotel	\$249	\$259
▲ HQ Philadelphia Marriott Downtown.....	\$232	\$242
1 Best Western Center City	\$149	\$159
2 Comfort Inn Downtown Historic Area.....	\$138	\$138
3 Crowne Plaza Philadelphia Downtown	\$208	\$208
4 Doubletree Hotel Philadelphia	\$213	\$223
5 Embassy Suites Philadelphia Center City.....	\$220	\$240
6 Four Points by Sheraton Philadelphia City Center	\$189	\$199
7 Four Seasons Hotel Philadelphia.....	\$255	\$255
8 Hampton Inn Center City Philadelphia.....	\$189	\$199
9 Hilton Garden Inn Philadelphia Center City		
<i>Standard Room</i>	\$200	\$200
<i>Jr. Suite</i>	\$220	\$220
10 Hilton Inn at Penn.....	\$239	\$239
11 Holiday Inn Express Midtown	\$155	\$165

	SINGLE	DOUBLE
12 Holiday Inn Philadelphia Historic District.....	\$185	\$195
13 Hyatt at The Bellevue.....	\$255	\$255
14 Hyatt Regency Philadelphia at Penn's Landing.....	\$235	\$235
15 Latham Hotel	\$169	\$169
16 Le Meridien Philadelphia	\$269	\$289
17 Omni Hotel at Independence Park	\$229	\$249
18 Philadelphia Downtown Courtyard by Marriott	\$218	\$228
19 Radisson Plaza-Warwick	\$200	\$200
20 Residence Inn Philadelphia City Center	\$232	\$242
21 Sheraton Philadelphia City Center Hotel.....	\$200	\$220
22 Sheraton Philadelphia University City Hotel	\$213	\$213
23 Sheraton Society Hill	\$199	\$229
24 Sofitel Philadelphia	\$213	\$223
25 The Ritz-Carlton Philadelphia	\$269	\$269
26 Westin Philadelphia	\$255	\$275

Beginning Saturday morning, June 25, shuttle transportation will be provided between the convention center and conference hotels further away than a short walk or cab ride. Service concludes following the closing session on Wednesday, June 29.

If you require accessible hotel accommodations: contact Experient, Inc. Customer Service at 1.866.229.2386 or email iste@experient-inc.com.

For all other accommodations, including accessible conference transportation, sign language interpreters, wheel chair/motorized scooter rental information, contact dan.potter@experient-inc.com.